

White Paper

Configuration of Fabasoft Folio Printer Ports

Fabasoft Folio 2026

Contents

- 1 Introduction 3
- 2 Software Requirements..... 3
- 3 Prerequisites 3
 - 3.1 Server..... 3
 - 3.2 Work Station 3
- 4 Configuring Fabasoft Folio 3
- 5 Configuring a Work Station 4
 - 5.1 Microsoft Windows Registry 4
 - 5.2 Fabasoft Folio Printer Ports..... 4
 - 5.3 Create a New Printer (Microsoft Windows 11) 6
- 6 Uninstalling 7
 - 6.1 Remove the Printer..... 7
 - 6.2 Remove the Port Type 7

1 Introduction

This document describes how to configure Fabasoft Folio Printer Ports (a maximum of four). When a PostScript printer is assigned to a Fabasoft Folio Printer Port and a document is printed with this printer, a Fabasoft Folio application is called, and the selected document is passed to this application as a parameter.

2 Software Requirements

System environment: All information contained in this document implicitly assumes a Microsoft Windows environment.

Supported platforms: For detailed information on supported operating systems and software see the software product information on the Fabasoft distribution media.

Descriptions in this document are based on the following software:

- Ghostscript 10.04 (64 bit)

3 Prerequisites

3.1 Server

On the server running Fabasoft Folio Conversion Services a supported PostScript interpreter (e.g., Ghostscript) has to be installed in order to create PDF documents from the imported PS documents.

3.2 Work Station

On the work station the Fabasoft Folio Client (`Setup\ComponentsBase\Client\FolioClient.msi`) has to be installed.

4 Configuring Fabasoft Folio

The Fabasoft Folio Printer Ports can be configured in the *Virtual Application Configuration* of the *Current Domain* or tenant.

To configure the Fabasoft Folio Printer Ports, perform the following steps:

1. Open the *Virtual Application Configuration* object of the *Current Domain* or tenant in edit mode.
2. On the "Third-Party Applications" tab create a new entry in the *Working With External Contents* field.
3. Open the detail view of the created entry.
4. In the *Context* field select "Print Port PostScript".

5. In the *Use Case* fields select the desired applications (e.g. FSCPOSTSCRIPT@1.1001:UploadFileFromPrinterApp).
6. Select a *Software Component* in order that the configuration is update-safe.
7. Click "Next" twice.

Note: The selected application in the *Use Case 1* field is mapped to the "FabasoftFolio<Version>1" printer port and so on.

Fabasoft Folio offers the following predefined application for the configuration of the Fabasoft Folio Printer Ports. It is possible to develop own applications, which may use the *Upload file from printer* application as basis to upload the file.

Upload file from printer
(FSCPOSTSCRIPT@1.1001:
UploadFileFromPrinterApp)

Object address: COO.1.1001.1.223404

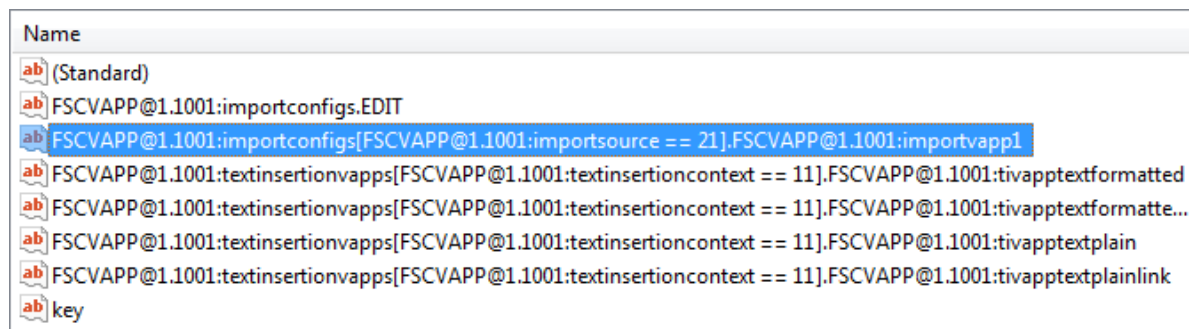
This application converts the printed document to PDF or PDF/A (depends on the conversion settings) and saves the document on the Fabasoft Folio desk of the user.

5 Configuring a Work Station

5.1 Microsoft Windows Registry

Make sure that the Fabasoft Folio Printer Port entries are available in the Microsoft Windows Registry. The entries (with FSCVAPP@1.1001:importsource==21) are written into the Microsoft Windows Registry of the work station when connecting to a Fabasoft Folio Domain with the Fabasoft Folio Web Client.

HKEY_CURRENT_USER\Software\Fabasoft\FabasoftFolioCX<Version>\<baseurl>\<useraddr>\config



5.2 Fabasoft Folio Printer Ports

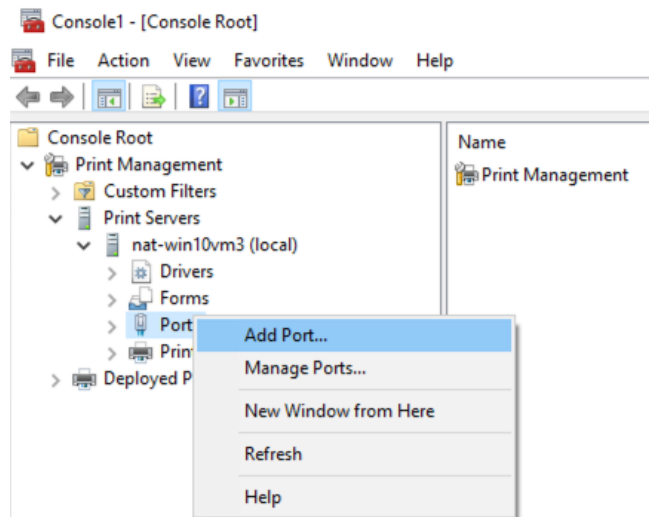
To be able to use the Fabasoft Folio Printer Ports to call applications defined in Fabasoft Folio (see chapter 4 "Configuring Fabasoft Folio") a new port type has to be created on the work station. The "Fabasoft Folio <Version> Print Import" port type provides four Fabasoft Folio Printer Ports.

Create a New Port Type (Microsoft Windows 11)

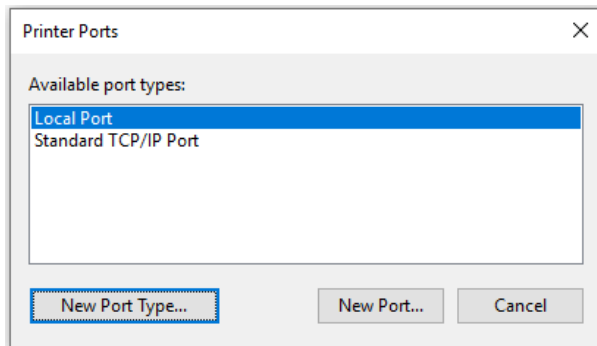
This chapter describes how to create a new port type.

To create the “Fabasoft Folio <Version> Print Import” port type, perform the following steps:

1. Unzip Setup\ComponentsBase\Client\FolioPrintImportWin64.zip (which can be found on the Fabasoft Folio installation media) to an arbitrary folder.
2. Execute `mmc` in a command line, to open a Microsoft Management Console.
3. Add the “Print Management” snap-in.
4. Press the “Add the Local Server” button and click “Finish”.
5. On “Print Management” > “Print Servers” > “work station” > “Ports” execute the context menu command “Add Port”.



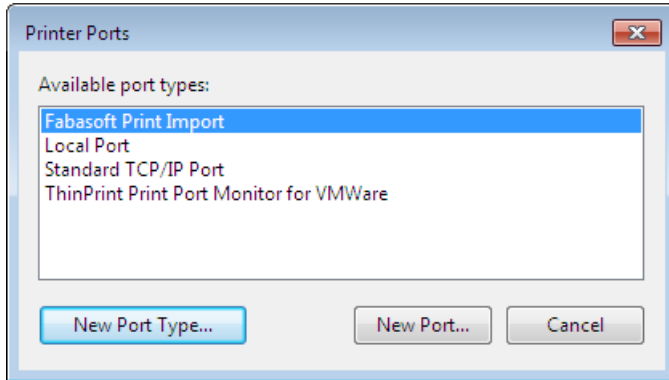
6. Click “New Port Type”.



7. Browse to the `fsctrprintimportmonitor.inf` file that has been unzipped in the first step and click “OK”.

The “Fabasoft Folio <Version> Print Import” port type is now available.

8. Click "Cancel".

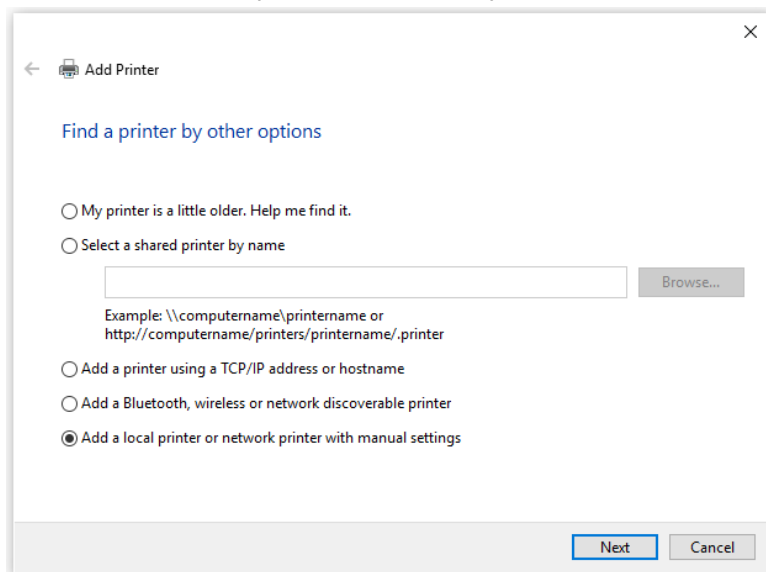


The ports are now available. Continue to configure a corresponding printer as described in chapter 5.3 "Create a New Printer (Microsoft Windows 11)".

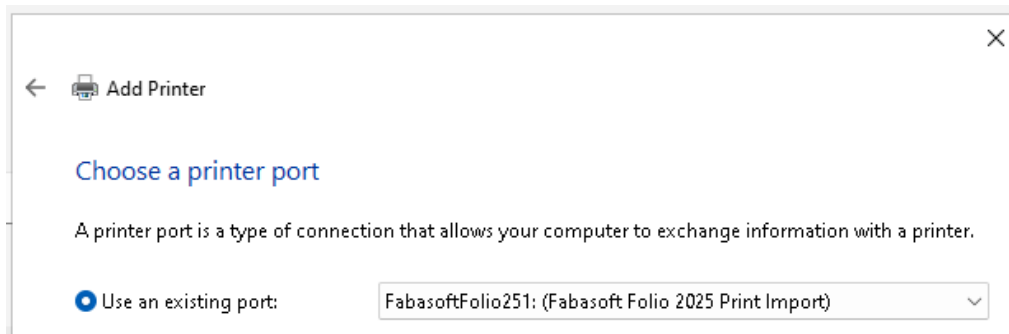
5.3 Create a New Printer (Microsoft Windows 11)

To add a new printer that uses a Fabasoft Folio Printer Port, perform the following steps:

1. Add a new local printer via the "Printers & scanners" Dialog.
2. Choose "The printer that I want isn't listed" after searching for new printers.
3. Select "Add a local printer or network printer with manual settings".



4. As port select the Fabasoft Folio Printer Port (e.g. "FabasoftFolio<Version>1").



5. Select an arbitrary PostScript printer and click "Next".
Note: The selected PostScript printer is used to create PostScript files of your documents, which are converted to PDF files with the Fabasoft Folio Conversion Services. The created PostScript files must be compatible to the third-party product (e.g. Ghostscript) that is used by the Fabasoft Folio Conversion Services for the conversion. Depending on the used PostScript printer, documents with long file names (about 150 characters) may not be converted.
6. After carrying out all steps of the wizard a new printer is available. Whenever you print documents on this printer the configured Fabasoft Folio application is started and in case of the `FSCPOSTSCRIPT@1.1001:UploadFileFromPrinterApp` application the PDF file is put on the Fabasoft Folio desk.

Note: Make sure to use a deprecated "V3 print driver" and not a "V4 print driver". Using a "V4 print driver" will result in following error message: "Unable to install printer. Double check the printer name and make sure that the printer is connected to the network."

6 Uninstalling

6.1 Remove the Printer

To remove a printer that uses the Fabasoft Folio Printer Port, perform the following step:

1. Remove the previously defined local printer (see chapter 5.3 "Create a New Printer (Microsoft Windows 11)") via the "Printers & scanners" Dialog.

6.2 Remove the Port Type

To remove the "Fabasoft Folio <Version> Print Import" port type, perform the following steps:

1. Open the Microsoft Windows Registry Editor.
2. Navigate to `HKEY_LOCAL_MACHINE\SYSTEM\CurrentControlSet\Control\Print\Monitors`.
3. Delete the `Fabasoft Folio <Version> Print Import` key.
4. Open the Microsoft Management Console and add the "Services" snap-in. Restart the "Print Spooler" service.
5. Open the Windows Explorer, navigate to `C:\Windows\System32\` and delete following two files: `fscprintimportconfigpm<version>.dll` and `fscprintimportmonitorpm<version>.dll`