



White Paper

Deployment of ActiveX Controls via Microsoft Windows Active Directory

Fabasoft Folio 2017 R1 Update Rollup 2

Copyright © Fabasoft R&D GmbH, Linz, Austria, 2018.

All rights reserved. All hardware and software names used are registered trade names and/or registered trademarks of the respective manufacturers.

No rights to our software or our professional services, or results of our professional services, or other protected rights can be based on the handing over and presentation of these documents.

Contents

1 Introduction	4
2 Software Requirements	4
3 Microsoft Installer Packages	4
4 Deploying Microsoft Installer Packages	5
5 Deploying Microsoft Installer Packages with Microsoft Windows Active Directory	5
6 Deploying Updated Microsoft Installer Packages	11
7 Distributing Registry Settings	11
8 References	11

1 Introduction

By design in Microsoft Windows Server, members of the "Users" group cannot install ActiveX controls without modifying the rights of the group. However, some administrators may want to allow the "Users" group to install ActiveX controls. This document describes how to assign the Fabasoft Folio ActiveX Controls in the Microsoft Windows Active Directory and how to adjust rights.

2 Software Requirements

System environment: All information contained in this document implicitly assumes a Microsoft Windows environment.

Supported platforms: For detailed information on supported operating systems and software see the software product information on the Fabasoft distribution media.

Descriptions in this document are based on the following software:

- Microsoft Windows Server 2012 R2 Standard
- MSI packages

Note: The Microsoft Installer Packages (MSI packages) are taken from the Fabasoft distribution media.

3 Microsoft Installer Packages

An ActiveX control must be packaged as a Microsoft Installer package (MSI file) in order to be distributed via Microsoft Windows Active Directory to the client desktops. The Fabasoft distribution media includes a set of Microsoft Installer packages that contain ActiveX controls and other client-side applications. These files are located in the folder `Setup\ComponentsBase\Client`.

Microsoft Installer Package	Description
FolioClient.msi	This Microsoft Installer package allows the interaction with third-party products.
CloudClientEnterprise.msi	This Microsoft Installer package allows the interaction with third-party products using the Fabasoft Cloud/Fabasoft Private Cloud.
FolioClientGroupWise.msi	This Microsoft Installer package provides functionality to integrate buttons in Novell GroupWise to call actions in the Fabasoft product environment.
FolioClientNotes.msi	This Microsoft Installer package provides functionality to integrate menu commands in IBM Notes to call actions in the Fabasoft product environment.

<p>FolioClientLibreOffice.msi</p> <p>Note: If you want to install this package directly on Microsoft Windows 7 (with activated UAC) or on Microsoft Windows 8.1 open an administrative command prompt and execute:</p> <pre>msiexec /i FolioClientLibreOffice.msi</pre>	<p>This Microsoft Installer package provides functionality to integrate buttons in LibreOffice to call actions in the Fabasoft product environment.</p>
<p>FolioClientAutoCAD_x86.msi FolioClientAutoCAD_x64.msi</p>	<p>This Microsoft Installer package provides functionality for the integration of Autodesk AutoCAD.</p>
<p>FolioClientKofax.msi</p>	<p>This Microsoft Installer package provides functionality for the integration of Kofax Capture.</p>
<p>FolioClientDocPropertyUpdate.msi</p>	<p>This Microsoft Installer package provides an add-in for Microsoft Word that ensures that DocProperties are updated when opening a document if no Fabasoft Folio Client is available (e.g. Fabasoft Folio Conversion Services).</p>
<p>FolioClientSAP.msi</p>	<p>This Microsoft Installer package provides functionality for Fabasoft iArchiveLink.</p>

4 Deploying Microsoft Installer Packages

Microsoft Installer packages can be distributed in several different ways:

- Microsoft Windows Active Directory used for assigning software to users or computers
- Microsoft Systems Management Server (SMS)
- Third party tools for software distribution

This document describes the assigning of software via the Microsoft Windows Active Directory. Microsoft recommends it as the preferred method in a secure network environment.

Microsoft Windows Active Directory must be available in order to assign ActiveX controls using Microsoft Windows Active Directory.

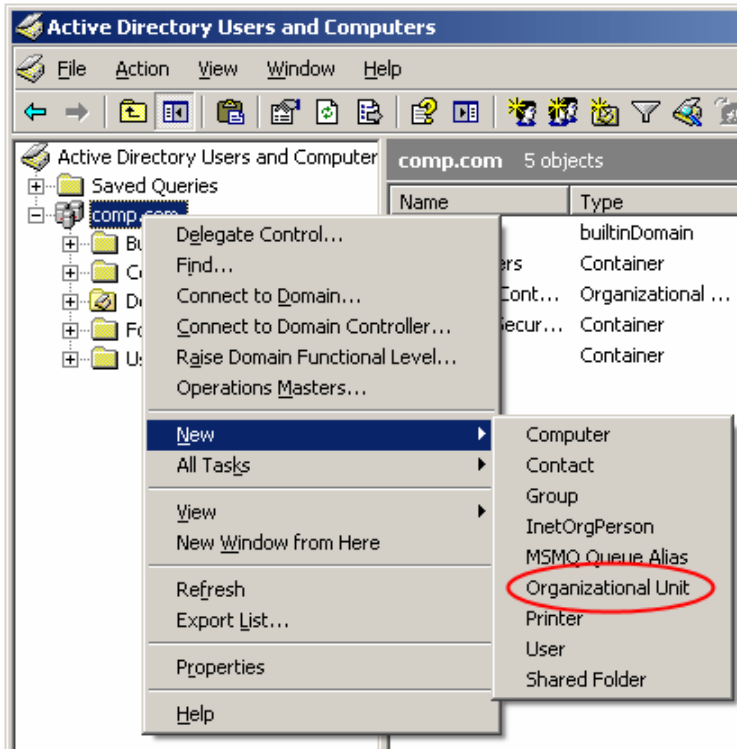
5 Deploying Microsoft Installer Packages with Microsoft Windows Active Directory

Microsoft Installer packages may be assigned to users and/or computers within a group policy object. To install the Microsoft Installer packages the packages have to be available for users. Therefore create a file share in the file system and copy the Microsoft Installer packages to this file share. Afterwards specify the corresponding rights for users, who need to install packages from this file share.

Attention: The deployment of all Fabasoft MSI packages has to be performed per machine ("Computer Configuration" folder).

To deploy Microsoft Installer packages with a Microsoft Windows Active Directory, perform the following steps:

1. Start the "Active Directory Users and Computers" MMC snap-in ("Start" > "Programs" > "Administrative Tools" > "Active Directory Users and Computers"). This console is used to administer users and computers in a Microsoft Windows Active Directory.
2. Navigate to the corresponding domain and create a new organizational unit ("New" > "Organizational Unit").



3. Specify a name for the organizational unit and click "OK".

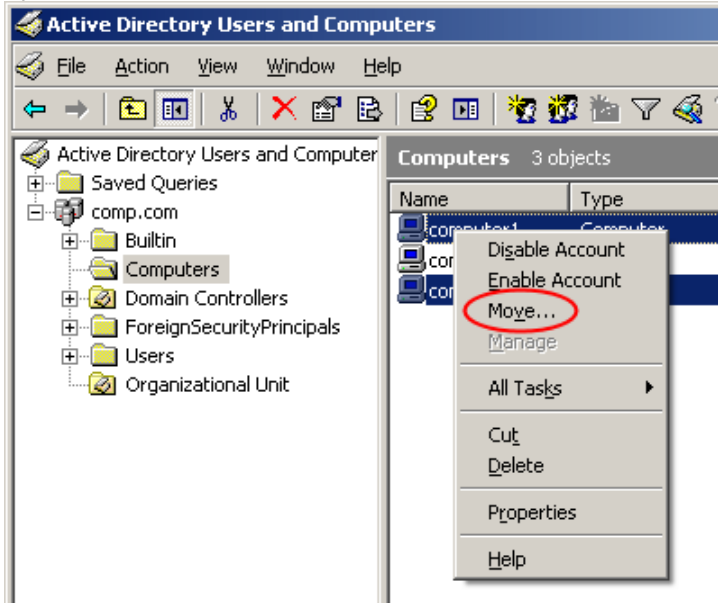
To deploy Microsoft Installer packages to users or computers move user accounts or computers to that previously created organizational unit or create new user accounts within.

Note: The deployment of Microsoft Installer packages depends on the settings in the group policy objects. If deployment is defined per computer ("Computer Configuration" folder) the Microsoft Installer packages are assigned to the computers defined in the organizational unit. If deployment is defined per user ("User Configuration" folder) the Microsoft Installer packages are assigned to the users specified in the organizational unit.

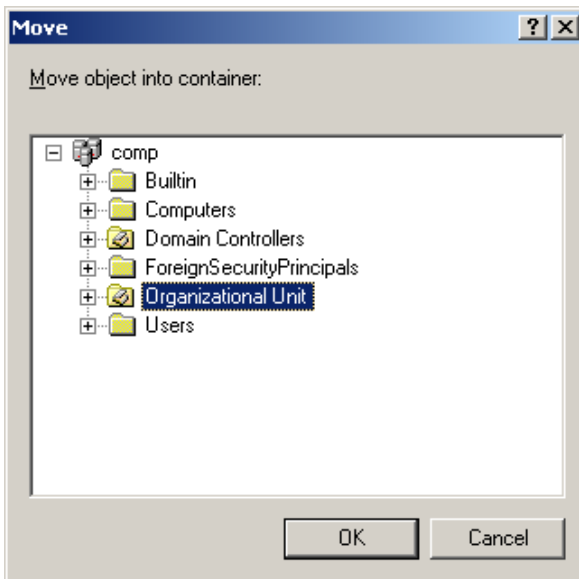
To move users or computers to an organizational unit, perform the following steps:

1. Navigate to the "Users" folder and select the users that should be moved. To move computers to an organizational unit, navigate to the "Computers" folder and select the computers that should be moved.

2. Open the context menu and click "Move".



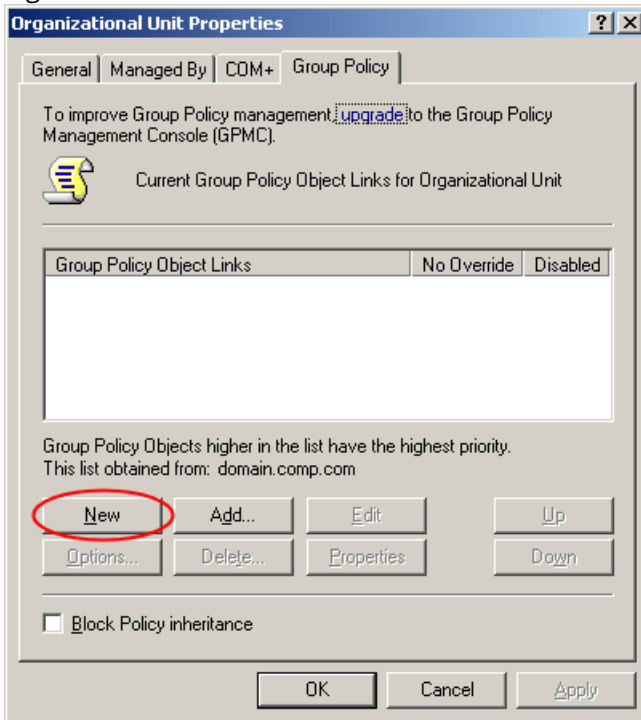
3. Select the organizational unit where these users or computers should be moved to and click "OK".



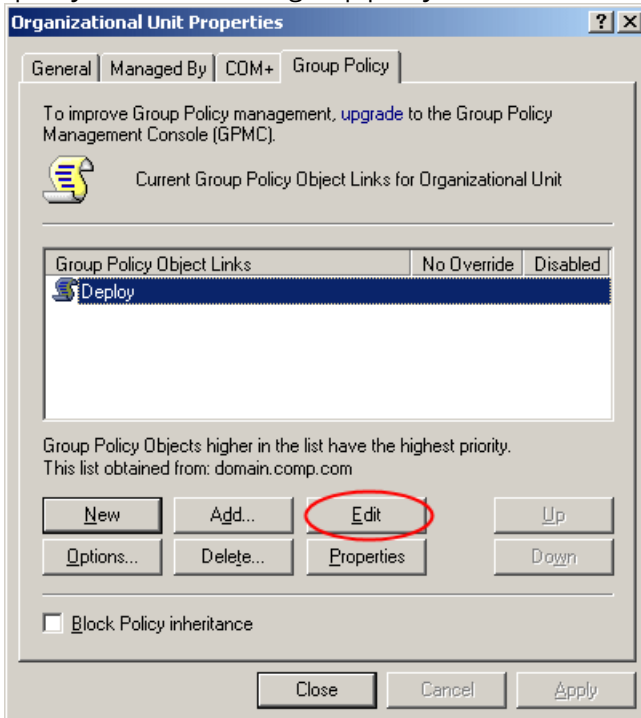
To create the group policy object, perform the following steps:

1. Navigate to the organizational unit the users or computers were moved to and open the properties of that organizational unit.

2. Open the "Group Policy" tab and click "New" to create a new group policy object for the organizational unit.



3. Specify the name of the group policy and click "Edit".

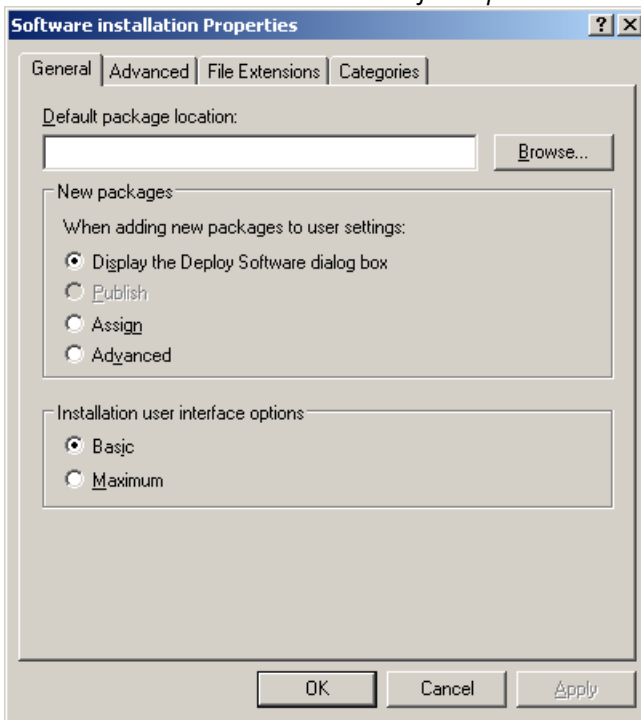


4. The "Group Policy Object Editor" is opened.

In the Group Policy Object Editor new software packages can be added. Perform the following steps:

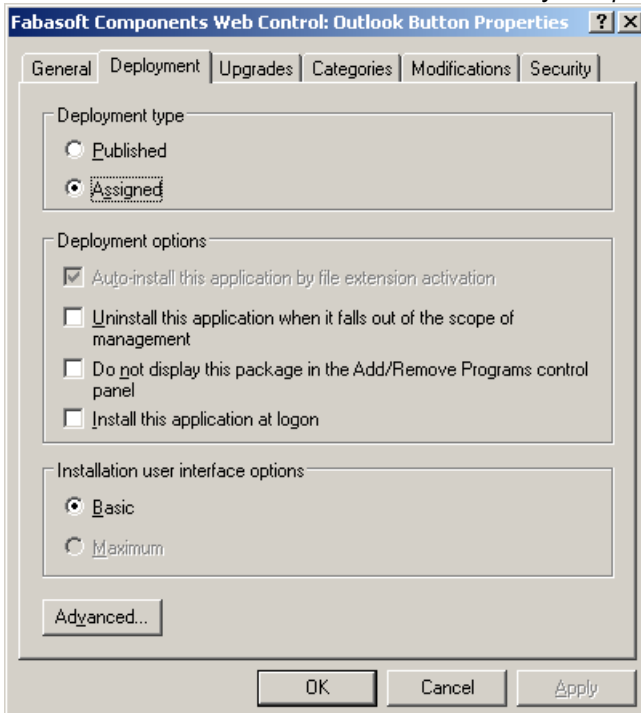
1. Navigate to the "Software installation" node of the "Computer Configuration" root folder.
2. Open the context menu and click "Properties".

- Verify that the *Display the Deploy Software dialog box* option in the *New packages* area is selected. So the deployment type can be chosen during the creation of a new package. *Basic* should be selected in the *Installation user interface options*.



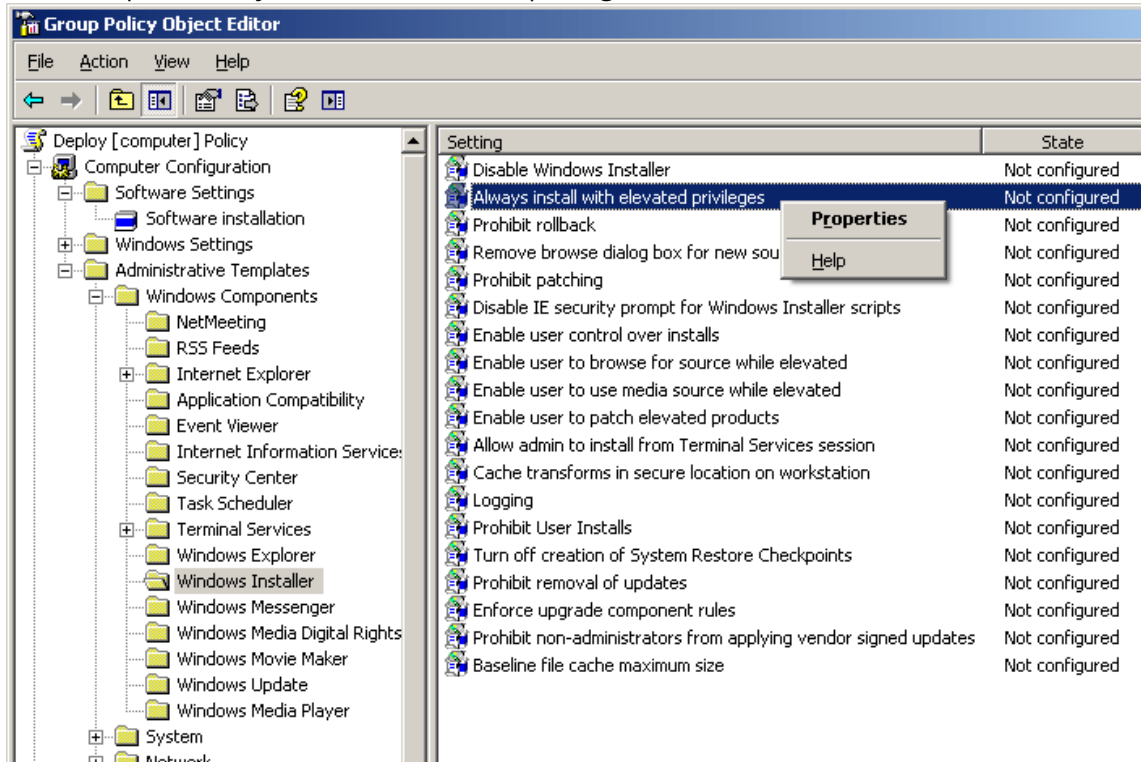
Click "OK" to close the "Software installation Properties".

- Create a new package in the "Software installation" node of the "Computer Configuration" root folder ("New" > "Package"). Browse to the Microsoft Installer package in the file share. Choose *Assigned* as the deployment type.
- Select the new package in the "Software installation" folder and open the properties of the package. Navigate to the "Deployment" tab and verify that the option *Assigned* is selected. *Basic* should be selected in the *Installation user interface options*.

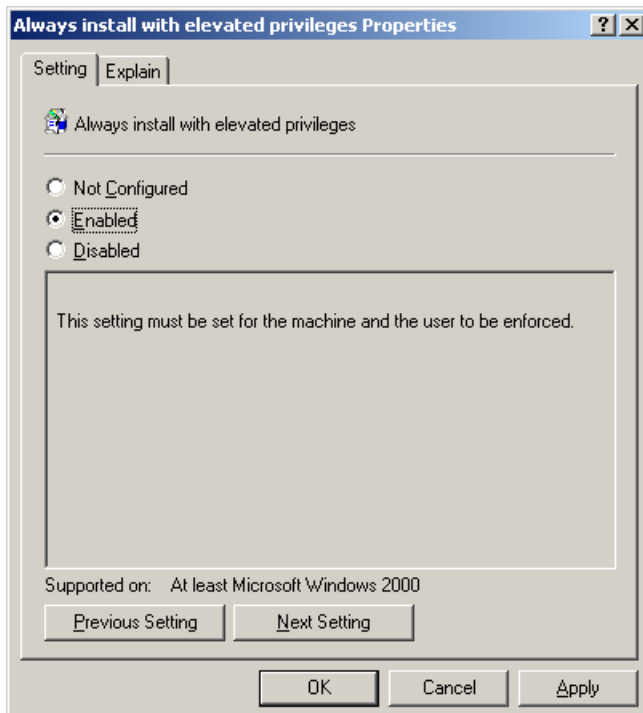


Note: It is also possible to publish the Microsoft Installer packages without the COM add-ins on the “User Configuration” folder. Be sure to choose *Published* as the deployment type in that case.

- To ensure that the Microsoft Installer package can be installed, when a computer is booted or a user logs on, an administrative template has to be configured. Navigate to the folder “Windows Installer” in the “Windows Components” folder in the “Administrative Templates” folder of the “Computer Configuration” or the “User Configuration” node respectively. Open the properties of the template “Always install with elevated privileges”.



- Select *Enable*.



8. Depending on the deployment type the Microsoft Installer package is installed or only made available on the computer:
 - If a Microsoft Installer package is assigned to a computer, the package will be installed when booting the computer.
 - User-published Microsoft Installer packages are made available to a user when the user logs on. The actual installation takes place when the ActiveX control is used for the first time. Publishing a Microsoft Installer package to a user means that the user receives permissions to install it at a later time.

Note: To force an immediate assumption of the defined group policies execute `gpupdate` or `secedit` (depending on the operating system) in the command line on the client machine. To view a group policy log execute `gpresult` via the command line.

6 Deploying Updated Microsoft Installer Packages

Consider the following when deploying newer versions of already deployed Microsoft Installer packages:

- Leave the original Microsoft Installer packages on the public file share.
- Copy the new Microsoft Installer packages to the public file share. Be sure that the original Microsoft Installer packages are not replaced by the new packages.
Note: Create a new folder for the new Microsoft Installer packages in the file share to ease administration.
- Add the new Microsoft Installer packages to the “Software Installation” node. The MMC snap-in will automatically detect an update of an already existing Microsoft Installer package.
Note: It is possible to specify if the older installation should be uninstalled or the existing installation should be updated.
- The Microsoft Installer packages are updated the next time the machines belonging to the distribution organizational unit are rebooted (per-machine deployment) or the users belonging to the distribution organizational unit log on (per-user deployment).

7 Distributing Registry Settings

The “Group Policy MMC Snap-in” allows an administrator to add machine or user-specific administrative templates. Such policy templates can be used to distribute registry keys and values to machines and users. In order to use group policies, Microsoft Windows Active Directory must be available.

The product DVD contains the administrative template `FscControlConfig.adm`. It is located in the folder `Setup\ComponentsBase\Client`. This policy template is imported into the Group Policy Console by executing the command “Add/Remove Template...” on the user-specific “Administrative Templates” folder.

With this template the COM add-ins for e.g. Microsoft Word and Microsoft Outlook can be configured.

8 References

Microsoft Knowledge Base Article Q280579: HOWTO: Install ActiveX Controls in Internet Explorer Using the Microsoft Active Directory.

